

## Connah's Quay Low Carbon Power

### Environmental Statement Volume III Figure 8-7: FEED 1 Abated Scenario, 1- hour Mean NO<sub>2</sub> Process Contribution

Planning Inspectorate Reference: EN010166

Document Reference: EN010166/APP/6.3

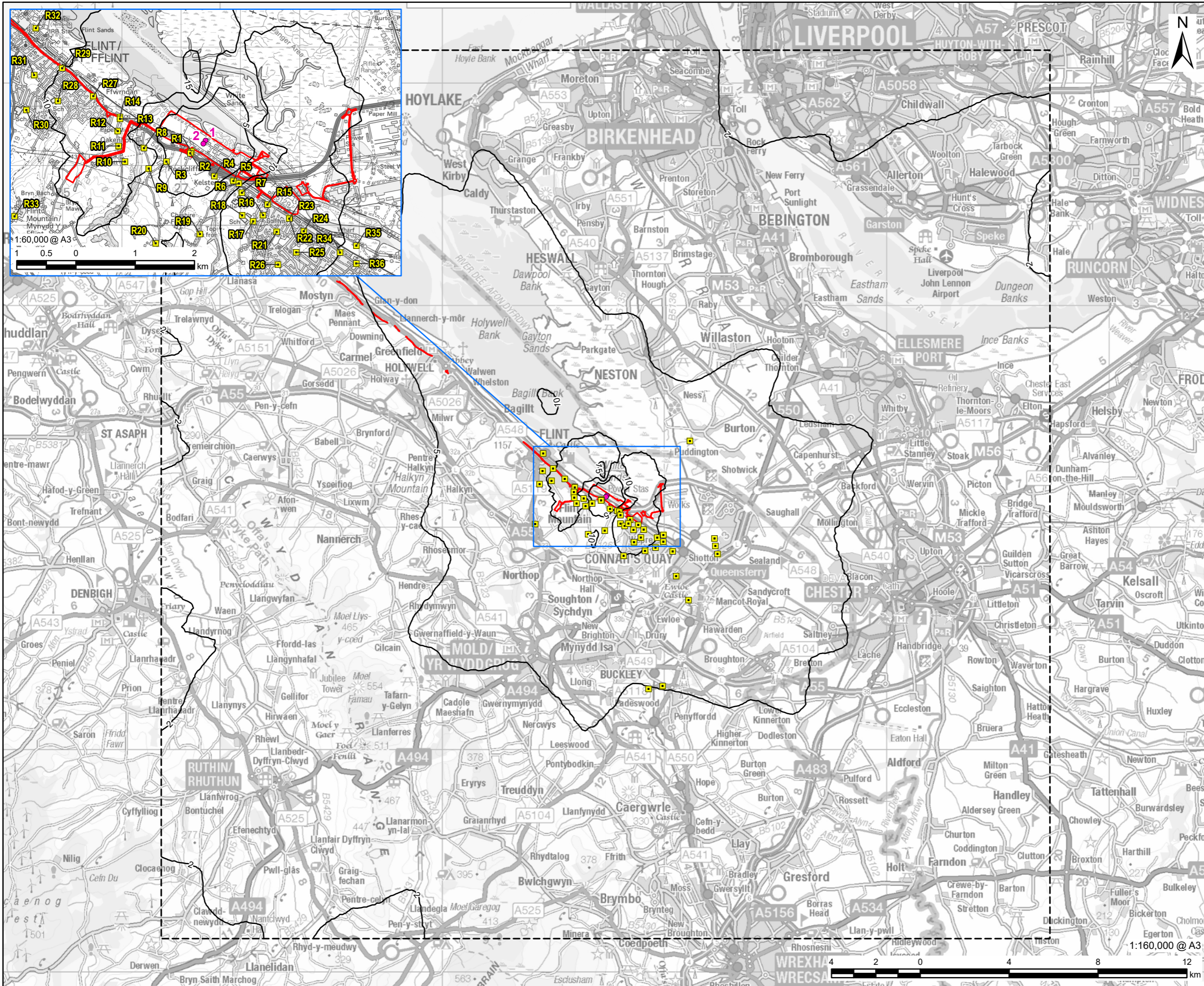
Planning Act 2008 (as amended)

Infrastructure Planning (Applications: Prescribed Forms and Procedure) Regulations

2009 - Regulation 5(2)(a)

Revision 01

March 2026



**PROJECT**  
 Connah's Quay Low  
 Carbon Power

**CONSULTANT**  
 AECOM Limited  
 The Colmore Building  
 Colmore Circus, Queensway  
 Birmingham, B4 6AT  
 www.aecom.com

- LEGEND**
- Order limits
  - Model Domain
  - Feed 1 - Absorber Stack
  - Human Health Receptor
  - 1-hour Mean NO<sub>2</sub> Process Contribution (µg/m<sup>3</sup>), 99.79th Percentile of Hourly Averages

**NOTES**  
 © Crown Copyright 2025. All rights reserved.  
 Ordnance Survey Licence AC0000808122.  
 Contains OS data © Crown copyright 2025.

**ISSUE PURPOSE**  
 Environmental Statement

**DATE**  
 March 2026

**PROJECT NUMBER**  
 60768754

**FIGURE TITLE**  
 FEED 1 Abated Scenario, 1-hour Mean  
 NO<sub>2</sub> Process Contribution

**FIGURE NUMBER**  
 Figure 8-7

This drawing has been prepared for the use of AECOM's client. It may not be used, modified, reproduced or relied upon by third parties, except as signed by AECOM or as required by law. AECOM accepts no responsibility, and denies any liability whatsoever, to any party that uses or relies on this drawing without AECOM's express written consent. Do not scale this document. All measurements must be obtained from the stated dimensions.